

AST-7200 51.2V 142Ah Lithium Battery

Solmax New Energy B.V.
www.solarfam.nl
1.2025

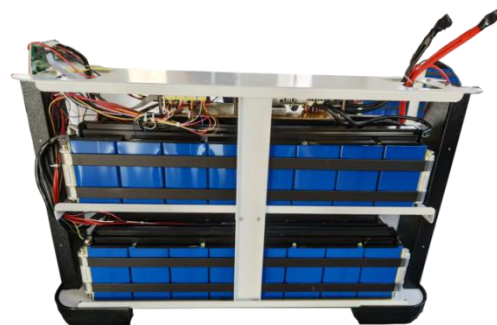
Advantages of AST-7200

-Size & weight: AST-7200 has the size of 712mm*195mm*465mm. It weighs half of the capacity-equivalent lead acid battery.

-Roller design: Reduces ground wear and tear, and the use position can be adjusted according to the environment easily.

-Case material: Sheet Metal Design. The product has nice appearance, stable structure, and is convenient for standardized production.

-BMS protection: Each of AST-7200 has an integrated battery management system which protects the battery from extreme cases. The following chart shows the basic protection functions of the BMS.



----->
Email: info25@solarfam.nl

----->
Tel: 0031-307855708

AST-7200 51.2V 142Ah Lithium Battery

Solmax New Energy B.V.
www.solarfam.nl
1.2025

Electrical Specifications

Nominal Voltage	51.2V
Nominal Capacity	142Ah
Nominal Energy	7200Wh
Internal Resistance	≤30mΩ
Self Discharge	3%/per month

Mechanical Specifications

Terminal Type	M8
Weight	63.35kg
Dimension	712*195*465mm
Cell type / Chemistry	LiFePO4
Case type	Sheet Metal Design
BMS: low voltage, high voltage, over temperature, over current, short-circuit protection, etc.	

Discharge Current and Voltage Specifications

Max Discharge Current	120A (5s)
BMS Low Voltage Cut-off	40V
Short Circuit Protection	300μs Auto release after charge/ load removal

Charge Current and Voltage Specifications

Max Charge Current	120A (5s)
BMS Over Charge Voltage Cut-off	58.4V
Balancing Voltage	3.4V

Temperature Ranges

Discharge Temperature	-15~65°C
Charge Temperature	0~60°C
Storage Temperature Range	-15~65°C
MOS High Temperature Protection	115°C

----->
Email:info25@solarfam.nl

----->
Tel: 0031-307855708